



Assembly procedure for 2.5" or 3.25" adjustable spring perches, KYB AGX, 99-05 Miata

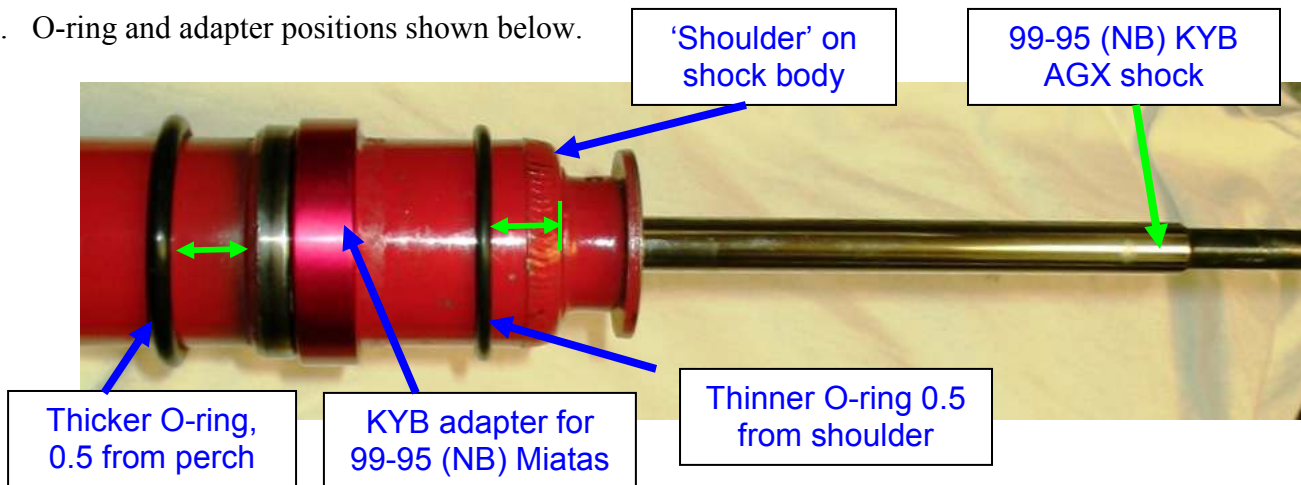
Need help? Call 408-221-8247!

KYB AGX (99-05) original spring perch

1. This must be removed prior to installing the FCM 2.5" or 3.25" kit. We recommend using a rubber mallet and holding the shock securely. Do NOT apply excess pressure to the shop body, otherwise the shock may explode!

Visual overview

2. O-ring and adapter positions shown below.



The Complete Picture – all distances, positions and orientations shown

Lower O-ring

3. Slide the lower (thicker) O-ring over the top of the shock body and 'flip' or slide is down until it is about 0.8" below the weld/spring perch.

KYB adapter

4. Slide the adapter over the shock body so it rests snug against the weld. The part is symmetrical so there is no preferred orientation.

Upper O-ring position

5. Slip the upper (thinner) O-ring over the shock and position it 0.5" inch below the 'shoulder' of the shock.

Orient FCM coil-over sleeve



6. For KYB shocks, position the sleeve with the deeper groove facing the shock body as shown below.



Fasten 2.5" or 3.25" spring perch (and jam nut, if supplied) to sleeve

Assemble sleeve onto shock

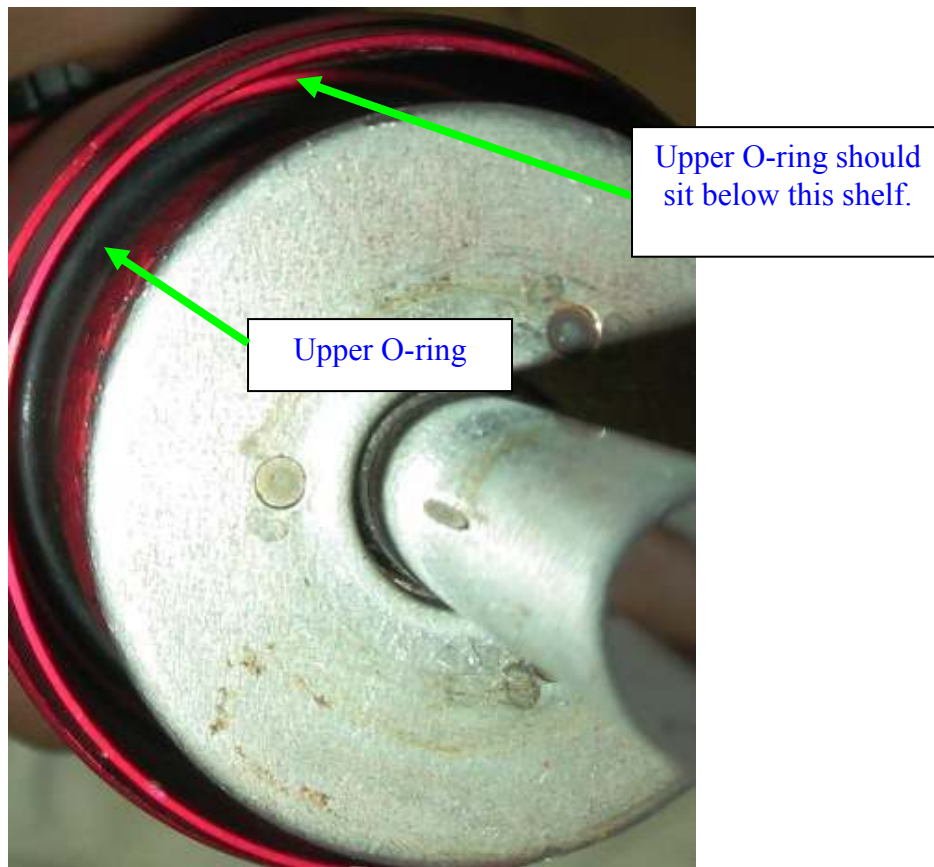
7. Check the position of the lower O-ring, adapter, and upper O-ring before sliding the sleeve/perch onto the KYB shock body.
8. The final assembled sleeve (perches/jam nuts not shown) should appear as in the following photo:



99-05 (NB) KYB sleeve assembled

Check upper O-ring position

9. Look from the top of the shock body, inside the sleeve.
10. Be sure the upper O-ring sits below the shelf of the inner sleeve area, as shown.
 - a. If the O-ring is not positioned correctly, take the sleeve off and adjust the position as needed
 - b. Verify the lower O-ring/grommet are still in the correct location
 - c. Slide the sleeve over the shock and re-check upper O-ring position.



11. Continue with the general coil-over assembly instructions.